



URIT- 5160 VET Hematology Analyzer

Laser light multi-dimensional cell classification

Resistant RBC mode

WIC and WOC for WBC counting

Up to 60 samples per hour throughput

With touch screen



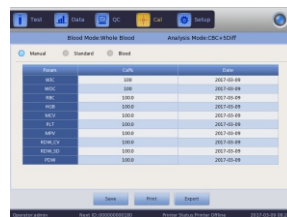
URIT

| Specifications |

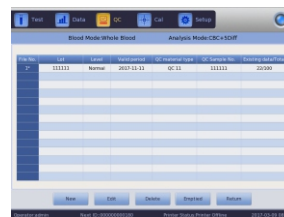
Animal Types	Dog, Cat, Horse, Pig, Cow, Buffalo, Rabbit, Monkey, Rat, Mice, Sheep, Goat, Camel and 3 user-defined
34 parameters	WBC, LYM%, MON%, NEU%, EOS%, BAS%, LYM#, MON#, NEU#, EOS#, BAS#, RBC, HGB, HCT, MCV, MCH, MCHC, RDW_CV, RDW_SD, PLT, MPV, PDW, PCT, P_LCR, P_LCC, RETIC%, RETIC_ABS, IRF Research Parameters: ALY#, ALY%, LIC#, LIC%, NRBC#, NRBC% 2 Histograms for RBC and PLT 2 Scatter grams for WBC 5-part differential
Principles of operation	WBC/DIFF: Flow Cytometry, Semi-conductor laser light multi-dimensional cell classification WBC Analysis: Optical and impedance measurements RBC/PLT Analysis: Impedance method HGB test: Cyanide-free reagent colorimetry
Reagent	Diluent, Sheath, Detergent, Lyse
Sampling modes	Whole blood : 20 μ L Pre-diluent : 20 μ L
Aperture Diameter	WBC 100 μ m, RBC/PLT 68 μ m
Throughput	Whole blood : up to 60 samples per hour Pre-diluent : up to 60 samples per hour
Data storage	Up to 200,000 sample results with grams
Alarms	Error messages
Display	10.4 inch with touch screen
Size	L490mm x H332mm x W459mm
Power	250VA
Weight	35KG



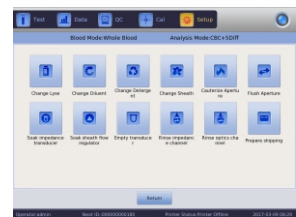
Main page



Calibration setting



QC setting



System maintenance

URIT MEDICAL ELECTRONIC CO., LTD.

Manufacturer: URIT Medical Electronic Co., Ltd.
Address: No. D-07 Information Industry District, High-tech Zone, Guilin, Guangxi 541004, P. R. China
Tel: +86-773-2288586 Fax: +86-773-2288560
E-mail: export@uritest.com service@uritest.com

Shenzhen Office
Add.: Room EJ, 24th Floor, New Baohui Building, Nanhai Road, Nanshan District, Shenzhen, P.R. China
Tel: +86-755-26050853 Fax: +86-755-86036150
Http://www.urit.com

