

NSK
CREATE IT.

Contra-Angle & Air Turbine
S-Max M series

NEW

The world-class M series is the next leap forward.

NEXT STAGE

The S-Max M series is the next phase of evolution of our globally acclaimed handpieces.

These new models are the embodiment of NSK's expertise in handpieces.

The M series delivers the reliability and safety demanded by both practitioners and the ever-changing standards of the dental instrument industry.

NSK's best-selling models are your best choice.



Contra-Angle

TOUGHNESS

The S-Max M series contra-angles have dramatically improved durability, and feature an updated internal body design and chuck mechanism. They are NSK's next-generation standard - a marriage of ergonomic sophistication and smooth cutting feel. Experience them for yourself.



DURABILITY

Updated internal body design

The all new internal design makes it even more durable, and it can withstand repeated autoclave sterilization and the hostile environment of thermo-disinfection.

Ceramic bearings

The ceramic bearings are 25% harder than steel and around half the weight, meaning very little wear, which helps the cartridge to last longer.

Clean Head System

The Clean Head System has an anti-suck back mechanism that stops blood and foreign matter from entering the head from the oral cavity. As a result, the ball bearings and mechanical parts last longer.

All stainless body

The handpiece body is stainless steel, making it rust-proof and sturdy. Its satin-like finish fits comfortably in your hand.



USABILITY

A new chuck mechanism provides even greater holding strength

The bur holding chuck mechanism has been updated further improving operator and patient safety. And because it's easy to use, you can totally focus on the treatment.

Slimmer shape

The grip has been made slimmer in response to requests for a design that avoids contact with the front teeth when accessing molars.

Push Button Chuck

The bur is released easily with the responsive and tactile push button.

Quattro spray

Sprays more effectively over the entire bur for better cooling. *M95L/M95 only

LINE-UP



1:5 Increasing

OPTIC MODEL: **M95L** ORDER CODE: **C1023**
 NON-OPTIC MODEL: **M95** ORDER CODE: **C1026**



- Max Speed : 200,000 min⁻¹
- Head Size : ø9.9 × H 14.5 mm
- For FG burs (ø1.6)
- Stainless Steel Body
- Push Button Chuck
- Ceramic Bearings
- Quattro Spray
- Anti Heat System
- Clean Head System
- Cellular Glass Optics



4:1 Reducing

OPTIC MODEL: **M15L** ORDER CODE: **C1025**
 NON-OPTIC MODEL: **M15** ORDER CODE: **C1028**



- Max Speed : 10,000 min⁻¹
- Head Size : ø9.6 × H 13.4 mm
- For CA burs (ø2.35)
- Stainless Steel Body
- Push Button Chuck
- Single Spray
- Clean Head System
- Cellular Glass Optics



1:1 Direct Drive

OPTIC MODEL: **M25L** ORDER CODE: **C1024**
 NON-OPTIC MODEL: **M25** ORDER CODE: **C1027**



- Max Speed : 40,000 min⁻¹
- Head Size : ø9.6 × H 13.4 mm
- For CA burs (ø2.35)
- Stainless Steel Body
- Push Button Chuck
- Single Spray
- Clean Head System
- Cellular Glass Optics



Straight Handpiece

1:1 Direct Drive

NON-OPTIC MODEL: **M65** ORDER CODE: **H1008**



- Max Speed : 40,000 min⁻¹
 - For HP burs (ø2.35)
 - For CA burs (ø2.35)*
 - Stainless Steel Body
 - Single Spray
 - Clean Head System
- *Need to insert the supplied bur stopper

Air Turbine

POWER

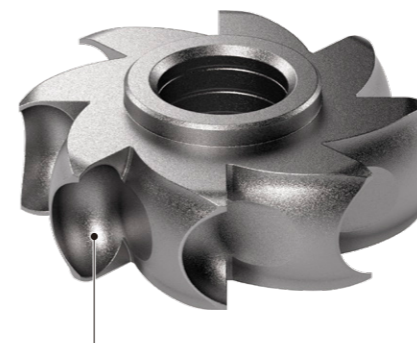
The new rotor shape was developed using a state-of-the-art computer simulation and fluid analysis software.

This rotor delivers a significant 6W boost in power from 20W to 26W.

The handpiece becomes an extension of the operator and provides a cutting feel that facilitates more intricate operations.

Its elegant, slim design is replete with the expertise and technology accumulated over decades by the handpiece experts at NSK.

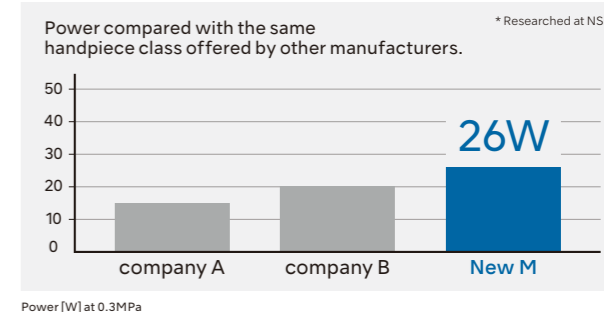
MORE POWERFUL



The new rotor design is optimized using a rotating air flow simulation, resulting in 26W of power through the efficient use of air supply energy.

26W power

The internal structure is completely redesigned to achieve superior noise and vibration reduction, including the new 26W high power rotor.



DURABILITY

All stainless body

The handpiece body is stainless steel, making it corrosion resistant and sturdy. Its satin-like finish fits comfortably in your hand.

Ceramic bearings

The ceramic bearings are 25% harder than steel and around half the weight, meaning very little wear, which helps the cartridge to last longer.

Clean Head System

The Clean Head System has an anti-suck back mechanism that stops blood and foreign matter from entering the head from the oral cavity. As a result, the ball bearings and mechanical parts last longer.

USABILITY

Simple cartridge change

The handpiece is designed with barrel type cartridge. The cartridge is easy to replace. Changing the cartridge also eliminates water blockage.

Quattro spray

Sprays more effectively over the entire bur for better cooling.

Push Button Chuck

The bur is released easily with the responsive and tactile push button.

LINE-UP

Standard Head



NSK Couplings

OPTIC MODEL: **M900L** ORDER CODE: **P1254**
NON-OPTIC MODEL: **M900** ORDER CODE: **P1256**

- Power: 26 W ● Speed: 325,000-430,000 min⁻¹ ● Head Size: ø12.1 x H 13.3 mm ● Stainless Steel Body ● Ceramic Bearings
- Push Button Chuck ● Clean Head System ● Cellular Glass Optics ● Simple Cartridge Change ● Quattro Spray



KaVo® MULTiflex® Couplings

OPTIC MODEL: **M900KL** ORDER CODE: **P1258**
NON-OPTIC MODEL: **M900K** ORDER CODE: **P1259**

- Power: 26 W ● Speed: 325,000-430,000 min⁻¹ ● Head Size: ø12.1 x H 13.3 mm ● Stainless Steel Body ● Ceramic Bearings
- Push Button Chuck ● Clean Head System ● Cellular Glass Optics ● Simple Cartridge Change ● Quattro Spray

COUPLING OPTIONS

Coupling		NSK (Optic)	NSK (Non-Optic)	KaVo® (Optic)	KaVo® (Non-Optic)	W&H® (Optic)	W&H® (Non-Optic)	Sirona® (Optic)	Bien-Air® (Optic)
Standard Head	MODEL	M900L	M900	M900KL	M900K	M900WL *	M900W	M900SL	M900BL *
	ORDER CODE	P1254	P1256	P1258	P1259	P1266	P1287	P1262	P1264
Miniature Head	MODEL	M800L	M800	M800KL	-	M800WL *	-	M800SL	M800BL *
	ORDER CODE	P1253	P1255	P1257	-	P1265	-	P1261	P1263

*Compatible Turbines with Integral LED

Miniature Head



NSK Couplings

OPTIC MODEL: **M800L** ORDER CODE: **P1253**
NON-OPTIC MODEL: **M800** ORDER CODE: **P1255**

- Power: 23 W ● Speed: 380,000-450,000 min⁻¹ ● Head Size: ø10.6 x H 12.4 mm ● Stainless Steel Body ● Ceramic Bearings
- Push Button Chuck ● Clean Head System ● Cellular Glass Optics ● Simple Cartridge Change ● Quattro Spray



KaVo® MULTiflex® Coupling

OPTIC MODEL: **M800KL** ORDER CODE: **P1257**

- Power: 23 W ● Speed: 380,000-450,000 min⁻¹ ● Head Size: ø10.6 x H 12.4 mm ● Stainless Steel Body ● Ceramic Bearings
- Push Button Chuck ● Clean Head System ● Cellular Glass Optics ● Simple Cartridge Change ● Quattro Spray

SPARE PARTS

MODEL	PRODUCTS	ORDER CODE	MODEL	PRODUCTS	ORDER CODE	MODEL	PRODUCTS	ORDER CODE
SX-SU03	Cartridge for Standard head	P1281	SX-SU04	Head cap for Standard head	P1027500	PTL O-ring Set (Pack of 5)		Y900580
SX-MU03	Cartridge for Miniature head	P1280	SX-MU04	Head cap for Miniature head	P1001500	SX-SU05	Head cap wrench for Miniature head & Standard head	20000535

KaVo® and MULTiflex® LUX are registered trademarks of Kaltenbach & Voigt GmbH & Co.
 Sirona® is a registered trademark of Sirona Dental Systems GmbH.
 W&H® is a registered trademark of W&H Dentalwerk Bürmoos GmbH.
 Bien-Air® and Unifix® are registered trademarks of Bien-Air Dental S.A.

Washable in the thermodisinfectior
 Autoclavable up to 135°C